



CUSTOMER FACING



FIELD MOBILITY



# ZEBRA ET5X ACCESSORY OVER VIEW





# ET5X ACCESSORY ECOSYSTEM



**Planned Accessory Release**  
\*Release Nov/Dec 2015  
\*\*Release Jan 2016  
\*\*\*Release Feb 2016  
\*\*\*\*Release Mar/Apr 2016





# SHARECRADLE SYSTEM



*Introducing the ShareCradle System:  
Terminal & Terminal Spare Battery “Cups” designed to be shared across of suite  
of Charge Only bases providing flexible & future proofed solutions.*

## 4-Slot ShareCradle



**CRD-ET5X-SE4CO1-01\***

ET5X 4-Slot Charge Only

- Solution for either: 4 x ET5X or 4x ET5X + 4x Optional Battery
- 19inch Rack Mountable (Mounting accessory required)
- Option to remove the left most cup & replace it w/ a adapter cup to mount and power a 4-Slot Battery Charger off of one power supply.



## 4-Slot Optional Battery PowerPack Toaster



**SAC-ET5X-4PPK1-01\*\***

ET5X 4-Slot Battery Charge for  
Optional battery PowerPack

- Drop in 4-Slot Battery charger with LEDs to indicate Charge State
- Can be docked in powered in 4-slot Cradle via adapter cup
- Can be used as a standalone charge requiring its own Power Supply and AC Line Cord

*5-Slot Cradles require power supply PWRS-14000-241R, DC Line Cord 50-16002-029R & country specific AC Line Cord sold separately*



**NOTE:**



- Charge Only Cups/Cradles will accept Rugged Frame and Non Rugged Frame
- Can be used with Expansion Back on the Tablet
- \* Release Date March 2015
- \*\*Release Date April 2016



**When used standalone, 4-Slot Battery Charger requires Power Supply (PWRS-14000-148C), AC Line Cord (sold separately)  
(See Country List on last page)**





## Charge Only 1-Slot Dock

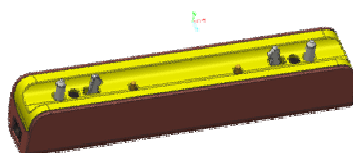


**CRD-ET5X-1SCG1**

ET5X 1-Slot Charge Only Dock

- Supports Charging with and without Rugged Frames
- Shim allows for charging without a Rugged Frame, will only work with exposed consumer connector

**Note: Requires power supply PWR-WGA12V60W-1WW & country specific AC Line Cord sold separately**



**CHG-ET5X-CBL1-01\*\***

Rugged Charge Connector (Charge dongle)

- Rugged charge cable breaks away to prevent tablet damage
- DC barrel input on the side

**Note: Requires power supply PWR-14000-148R & country specific AC Line Cord sold separately**

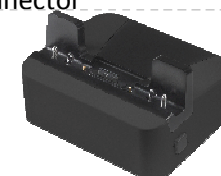
## Charge/Communication 1-Slot Dock



**CRD-ET5X-1SCOM1**

ET5X 1-Slot Charge and Communication Dock

- Dock station charges and extends I/O for: HDMI, Ethernet 3 USB 3.0 ports
- Shim allows for charging without Rugged Frame, will only work with exposed consumer connector



**CRD-ET5X-1SCOM1R-01\*\***

1-Slot Dock with Rugged IO Adapter

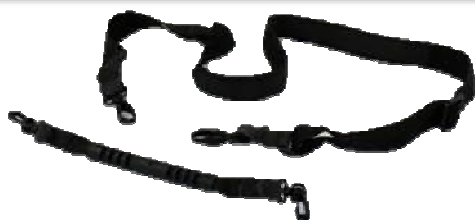
- Dock Station Charges and extends Rugged I/O for: HDMI, Ethernet, 3 USB 3.0 Ports
- Will only work with Rugged Frame with Rugged IO Connector

**Note: Requires power supply PWR-WGA12V60W-1WW & country specific AC Line Cord sold separately**



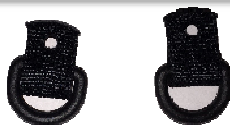
# 8" & 10" RUGGED FRAMES

## Straps & D-Clips



**SG-ET5X-SHDRSTP-01\***

Break away Shoulder Strap



**SG-ET5X-DCLIP-01\***

2 D-Clips that screw to the rugged frame

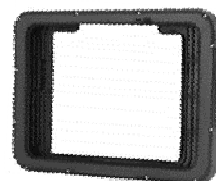
**SG-ET5X-HNDSTP-01\***

Handle strap



- D-clips allow the attachment of straps to the rugged frame via the screw points on the back
- Break away shoulder strap has points near the clip that break when pulled this is a safety feature for the user
- Handle strap provides ease of carrying the tablet with plastic grips

## 8" & 10" Rugged Frames



**SG-ET5X-8RCSE1-02\***

8" Rugged Frame with IO Connector (Included)



**SG-ET5X-10RCSE1-01\***

10" Rugged Frame with Rugged IO (Included)

- Improves drop 1.8 meters (6') to concrete
- Sealed I/O connector replaces bottom dust cover
- Screw points on back to attach hand and shoulder straps
- Will work with Expansion Backs
- **NOTE\*:** Current 8" Rugged Frame will EOS and a new 8" will be updated with the same design as the 10"



# 8" & 10" OPERATIONS CASE

## 8" & 10" Operations Case



**SG-ET5X-8HLST-01\***

Operational Case – 8"



**SG-ET5X-10HLST-01\***

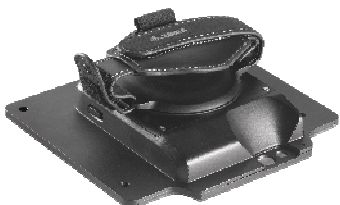
Operational Case - 10"

- Supports tablet without rugged frame
- Made of a leatherette material
- Pen loop for stylus
- Clip points in 4 corners supports addition of
  - Hand strap
  - Shoulder strap or
  - Cross body belt strap
- Universal D clip mounting points can accommodate additional accessories
- Will work with Expansion Backs



# EXPANSION BACKS

## 8" & 10" Expansion Back (No Scan)



### ZBK-ET5X-8RH1-01\*\*

8" Expansion Back  
Accessory + rotating  
Hand Strap (Optional  
Battery sold separately)

### ZBK-ET5X-10RH1-01\*\*

10" Expansion Back  
Accessory + rotating  
Hand Strap (Optional  
Battery sold separately)

- Expansion back will screw down to back of tablet when battery door is removed
- Rotating Hand Strap base
- Optional PowerPack battery (sold separately)

## 8" & 10" 4750/4710 Expansion Back



### ZBK-ET5X-8SCN5-01\*\*

8" SE4750 Expansion Back Accessory  
+ rotating Hand strap (Optional  
Battery sold separately)

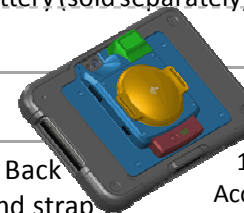
### ZBK-ET5X-10SCN5-01\*\*

10" SE4750 Expansion Back  
Accessory + rotating Hand strap  
(Optional Battery sold separately)

- Expansion back will screw down to back of tablet when battery door is removed
- Workers can capture 1-D and 2-D bar codes in virtually any condition, at lightning speed.
- Rotating Hand Strap base and Integrated Scanner
- Optional PowerPack battery (sold separately)

### ZBK-ET5X-8SCN1-01\*\*\*

8" SE4710 Expansion Back  
Accessory + rotating Hand strap  
(Optional Battery sold separately)



### ZBK-ET5X-10SCN1-01\*\*\*

10" SE4710 Expansion Back  
Accessory + rotating Hand strap  
(Optional Battery sold separately)

- Expansion back will screw down to back of tablet when battery door is removed
- Workers can capture 1-D and 2-D bar codes via LED Laser (Indoor use)
- Rotating Hand Strap base and Integrated Scanner
- Optional PowerPack battery (sold separately)



# BATTERY OPTIONS

## Optional PowerPack Battery



**BTRY-ET5X-PRPK1-01\*\***

Optional Battery PowerPack 6800 mAh

- Hot swappable enables 24x7 usage
- Can be used in addition to the main battery capacity
- Designed for use with optional Z-Back
- Will be charged by 4-slot battery charge
- Gas Gauge LED to display the amount of charge

## 8" & 10" Internal Battery



**BTRY-ET5X-8IN1-01**

8" Internal Battery, 5900 mAh

- 5-6 hrs continuous WLAN usage with display on
- 4-5 hrs continuous WAN usage with display on



**BTRY-ET5X-10IN1-01**

10" Internal Battery, 8700 mAh

- 8-9 hrs continuous WLAN usage with display on
- 7-8 hrs continuous WAN usage with display on



# **ZEBRA** SCREEN PROTECTOR AND STYLUS

## Active Stylus



**KT-ET5X-ASTY1-01\***

Active Stylus

- Pen tip supports 256 levels of pressure detection
- Runs on one AAAA battery
- Supports palm rejection
- Support both the 8" (Q1'16) and 10" tablets
- Will work when water is on the display
- NOTE: will not work in screen areas where water is pooled

## 8"&10" Screen Protectors w&w/o Rugged frames



**KT-ET5X-8SCRN1-01\*\***

**KT-ET5X-10SCRN1-01\*\***

Screen Protector – 8"

Screen Protector – 10"

- Screen protector will be film overlay
- Protects the screen from hazing, scratching, cracking



**KT-ET5X-8SCRN1-02\*\***

**KT-ET5X-8SCRN1-02\*\***

8" Screen Protector Used w/  
Rugged Frame only

8" Screen Protector Used w/  
Rugged Frame only

- Screen protector will be film overlay
- Protects the screen from hazing, scratching, cracking
- Will fit specifically in the Rugged Frames

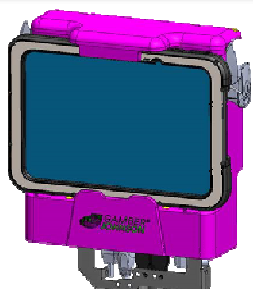
\*Release Oct 2015

\*\*Release Nov 2015



# GAMBER JOHNSON AND PROCLIP VEHICLE CRADLE DESIGN

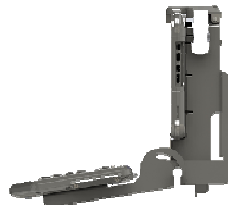
## GJ Rugged Mounting Cradle



8" rugged Cradle\*



10" rugged Cradle\*



- Designed by Gamber Johnson to support rugged mounting needs such use on a fork lift
- Key lockable, clamps secure the tablet
- Will only work with rugged frame tablets
- Keyboard mount offered to support iKey keyboards
- Offered through Gamber Johnson, not Zebra
- Communication interface
- Use with third party power supply from Lind

## Pro Clip Mounting Cradle



- The mounting cradle is designed by ProClip and will be offered through ProClip channels
- It will not be a Zebra catalog part
- Charge and mount only options available
- Key lock option supported
- Rugged frame and non-rugged frame tablets options are available
- Accommodates Expansion Back and flat back
- 8" and 10" versions
- Will Release in Mar 2016

\*Release Mar 2016





Thank You!